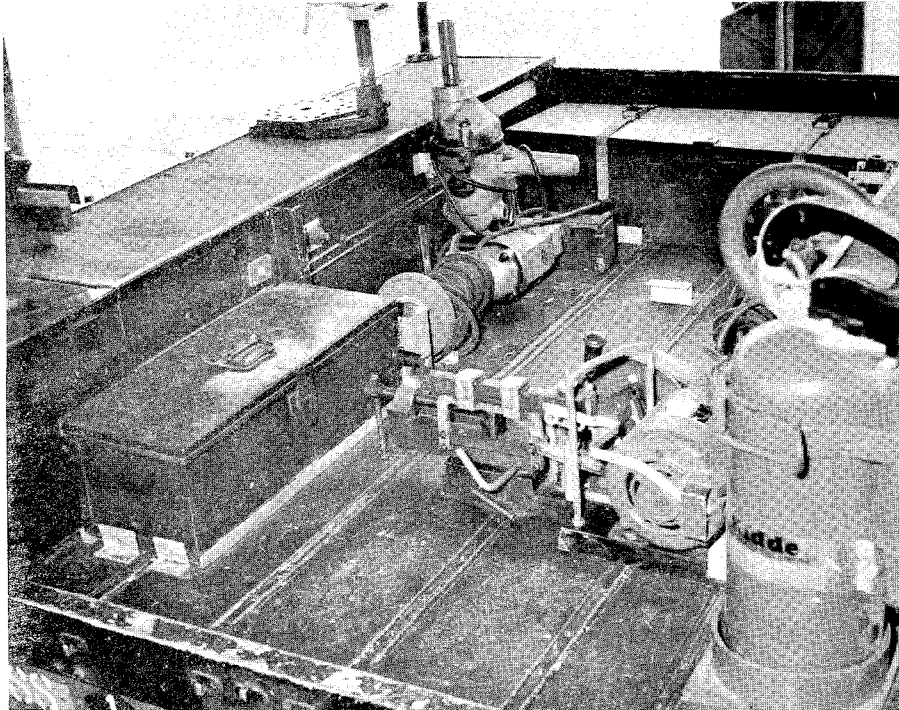


MACHINE SHOP, TRAILER MOUNTED, 1/2 TON
DATA SUMMARY

Purpose

1. This equipment is used to provide general engineering facilities for tradesmen in the field. This instruction has been completely revised.



General Data

2. **Mass.**
 - a. Unladen : 430 kg
 - b. Maximum laden : 800 kg
3. **Wheel and Tyres.**
 - a. Type : 16 inch rim
 - b. Tyre - size : 7.50-16, 6 ply
 - c. Tread : cross country, non directional
 - d. Pressures:
 - (1) On highway : 320 kPa
 - (2) Cross country : 200 kPa
 - (3) Mud and sand : 150 kPa
4. **Dimensions.**
 - a. Length overall : 3200 mm
 - b. Width overall : 1670 mm
 - c. Height overall : 2030 mm
 - d. Track : 1320 mm
 - e. Ground clearance : 350 mm
 - f. Tray height : 800 mm
 - g. Rail gauging : clears all states
5. **Shipping Data (Volume).** 11 m³
6. **Electrical System.**
 - a. Lighting : 12 V
 - b. Connector plug : 12 pin NATO

7. **Performance.**

- a. Angle of approach : 26 degrees
- b. Angle of departure : 34 degrees

8. **Normal Prime Mover.** Truck Cargo 3/4 Ton GS
Truck Utility Light GS

TABLE 1 - MACHINE SHOP EQUIPMENT

Designation	Qty
Extension, adjustable, bow vehicle	3
Frame Cover, vehicular body	1
Post Corner, long	2
Post Corner, short	2
Top Assembly Extension Kit, vehicular fitting, w/o floor	1

TABLE 2 - LIGHT AND POWER EQUIPMENT

Designation	Qty
2 core 460 mm c/w socket and lugs	1
3 core 1830 mm c/w plug and power outlets	1
3 core 1830 mm c/w plug and socket	4
3 core 9100 mm c/w plug and socket	1
Light Extension, fluorescent w/cable 240 V ac	1
Rod, earthing, 910 mm lg by 35 mm dia	1
Panel, power distributor	1

TABLE 3 – TECHNICAL EQUIPMENT

Designation	Qty
Drill, electric, portable, 240 V, 6 mm	1
Drill, electric, portable, 12 V ac/dc, 9 mm	1
2 core cord c/w battery clips	1
Drill, electric, portable, 240 V, ac	
12 mm 50 Hz, single phase	1
Drill, electric, portable, 30 mm, heavy duty	
240 V ac, 50 Hz, single phase	1
Jack Kit, hydraulic hand, 20 ton remote control	1
Grinder, electric, portable, 150 mm 240 V ac	1
Saw, reciprocating, portable, electric, 60 mm lgth	
of stroke, 240 V double insulated	1
Stand, portable, electrical drill, vertical	1
V-block, matched pair, 76 mm lg by 63 mm H by	
40 mm W	2
Set, saw, hole	1
Tool Box, portable, steel	2
Vice, bench and pipe, universal	2

9. Associated Publications.

a. AC in WM	:	22716
b. CES	:	2193
c. Census Code No	:	6017A
d. RPS:		
(1)	:	AUST/MT/157 (Chassis only)
(2)	:	02060

END